



**Look no further for
a unique meeting
room experience!**

The Council Room

SCI's Council Room is a beautifully presented traditional room located on the ground floor of the building.

The Council Room is the ideal setting for prestigious boardroom style meetings but can also be used for lectures and presentations, fine dining, evening receptions and other more formal occasions.

The floor-to-ceiling French doors give a light and spacious feel, and provide access to a private terrace. With many of the original features, such as the cornices and decorated ceiling, still in place, this lavish room offers you modern facilities in a traditional setting.

This classic venue will give a luxurious atmosphere to all events.

Features:

- ▶ Two 65" LED display screens
- ▶ Barco click share (for up to 6 consoles)
- ▶ Free Wi-Fi
- ▶ Teleconference system
- ▶ Laptop
- ▶ Videostreaming from the Auditorium

Additional meeting rooms are available. Contact SCI to check availability or arrange a viewing of all of the SCI event facilities located in the heart of stunning Belgravia.

E: meetingrooms@soci.org

T: +44 (0)20 7598 1500

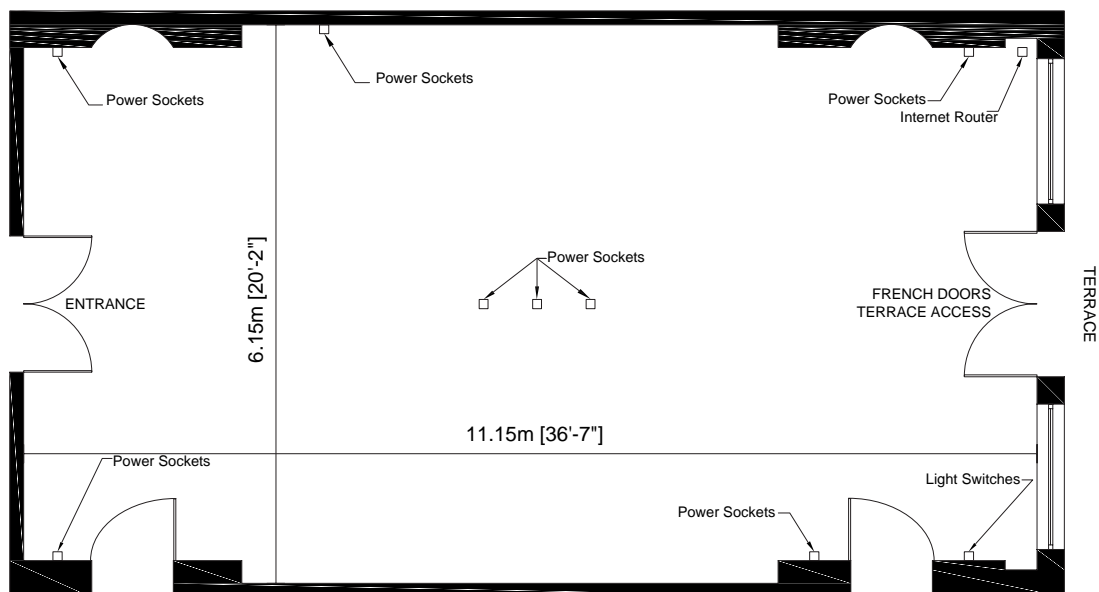
www.soci.org/meeting-rooms

SCI, 14/15 Belgrave Square, London SW1X 8PS

(Within 10 min walk of Victoria, Hyde Park Corner and Knightsbridge tube stations)



Floorplan



Alternative Set-ups



Theatre Style: 45



Reception Style: 70



Boardroom Style: 25

Rates*	Council Room
Full Day (9.30am - 5.00pm)	£650
Single Session (3.5hrs)	£390
Extra Time (per 30 mins)	£35
Extra Time (per 30 mins after 8pm)	£115
<p>* Prices exclude IT equipment hire and catering (see www.soci.org/meeting-rooms for more details). All prices are subject to VAT at the current rates. SCI members and charities are entitled to a 30% discount on room hire, excluding equipment hire.</p>	

Book your next meeting with us

E: meetingrooms@soci.org

T: +44 (0)20 7598 1500

www.soci.org/meeting-rooms

SCI, 14/15 Belgrave Square, London SW1X 8PS

(Within 10 min walk of Victoria, Hyde Park Corner and Knightsbridge tube stations)

