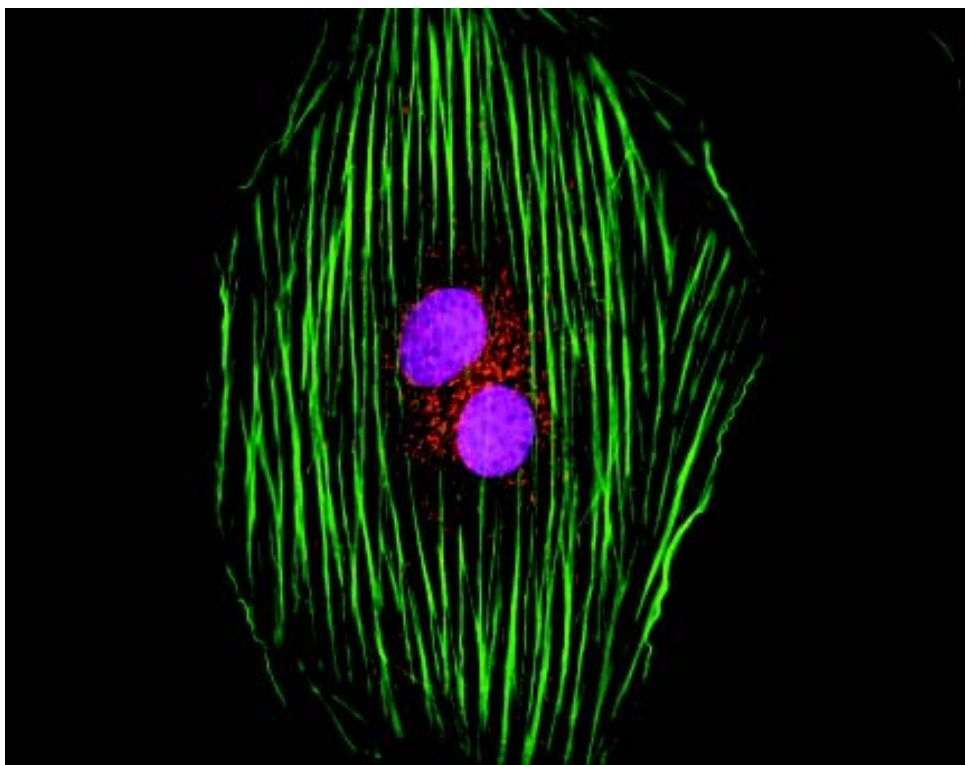


Rheology of Soft Matter: Rideal Lecture and Supporting Symposium



Tuesday 5 April 2005

SCI,14/15 Belgrave Square, London, UK

RSC
ROYAL SOCIETY OF CHEMISTRY



WILEY

SCI
where science meets business

Organised by the SCI Colloid and Surface Chemistry Group and
RSC Colloid and Interface Science Group

PROGRAMME

Scientific Organising Committee

Andrew Howe, Kodak Ltd R&D
Brian Vincent, University of Bristol

- 13.30 Registration and Coffee
- 13.50 **AGMs of Colloid Groups of SCI and RSC**
- 14.00 **Emulsion Polymerisation using Zwitterionic Surfactant Stabilisers**
Paul Reynolds, Bristol Colloid Centre, UK
- 14.30 **Nanotechnology in Aspic - Colloid Science in Photography**
Andrew Howe, Kodak Ltd R&D, UK
- 15.00 **Understanding the Rheology of Steric Stabilised Systems**
Paul Luckham, Imperial College of Science Technology and Medicine, UK
- 15.30 Tea
- 16.00 **From Mud to Worms ... the Rheology and Colloid Science of Oil Recovery**
Geoff Maitland, Schlumberger Cambridge Research Laboratory, UK
- 16.30 **Adventures in Psychorheology**
Roy Hughes, Bristol Colloid Centre, UK
- 17.00 **Use of Inulin (Polyfructose) based Surfactants in Emulsion Polymerisation**
Tharwat F Tadros, Consultant, UK
- 17.30 Wine Reception
- 18.00 **The Rideal Lecture:
The Rheological Challenges of Soft Matter**
Jim Goodwin, Interfacial Dynamics Corporation, USA
- 19.00 Conference Dinner (tickets only)

Front cover image photograph by Jason Kilgore, Molecular Probes Inc. This represents the front cover of Jim Goodwin's book 'Colloids and Interfaces with Surfactants and Polymers – An Introduction' published by Wiley.

Rheology of Soft Matter

What is soft matter? We are! ... at least in part. As are other materials made of colloids, polymers and surfactants, such as: membranes, liquid crystals, soft interfaces, complex fluids, gels, and pastes. Soft matter has properties between those of simple liquids and solids, and is easily deformable by external stresses, electric or magnetic fields, or even thermal fluctuations. Mesoscopic structure and dynamics determine the rheological properties, and hence function, of soft materials. For synthetic materials, rheology can be critical to performance during manufacture or in the operation of the final product. Many industries use soft materials, including: adhesives, agrochemical, biotechnology, construction, cosmetic, electronics, food, household goods, imaging, oil, packaging, paint, pharmaceuticals, and printing.

The Rideal Lecturer - James W Goodwin

Jim is co-founder and Managing Director of Interfacial Dynamics Corporation. For 30 years until 1996, Jim led research at Bristol University on the rheology of many types of soft matter and on interparticle forces, and was Deputy Director of the Bristol Colloid Centre. He has published about 100 articles on topics such as the preparation of polymer colloids, the rheology of clays, latexes, blood, self-associating polymers and microgels as well as particle scattering and the influence of nutrition on multiple sclerosis. Jim has also edited three books on colloidal systems and is co-author of the textbook "Rheology for Chemists". His latest book, "Colloids and Interfaces with Surfactants and Polymers – An Introduction" was published in 2004.

Please detach the slip below

Rheology of Soft Matter: Rideal Lecture and Supporting Symposium

Tuesday 5 April 2005, SCI, 14/15 Belgrave Square, London, UK

Fee includes refreshments as stated in the programme.

Please tick appropriate box.

SCI/RSC/BSR/BCC Members	£ 35	<input type="checkbox"/>	Non-Members	£ 80	<input type="checkbox"/>
SCI/RSC/BSR/BCC Students	£ 15	<input type="checkbox"/>	Non-Member Students	£ 30	<input type="checkbox"/>
Retired Members	£ 25	<input type="checkbox"/>	Conference dinner	£ 30	<input type="checkbox"/>
SCI Membership number	Please send me information about SCI				<input type="checkbox"/>

SURNAME.....FIRST NAME.....

INITIALS.....TITLE.....Mr/Mrs/Miss/Ms/Dr/Prof

POSITION.....DEPT.....

ORGANISATION.....

ADDRESS.....

.....POST/ZIP CODE.....

TEL.....FAX.....

EMAIL.....

Special requirements: dietary/access/other.....

Please register me for the above conference

Signature Date.....

PLEASE NOTE THAT UNSIGNED FORMS CANNOT BE ACCEPTED

REGISTRATION FORM

SCI

Register online at www.soci.org



To encourage and support the interchange of information, knowledge and opinion between individuals, businesses and other organisations interested in any aspect of the development and application of chemistry and related sciences throughout the world

The Society of Chemical Industry (SCI) is an interdisciplinary network connecting industry, research and consumer affairs at all levels throughout the world. Founded in London in 1881 and New York in 1894, SCI provides opportunities for forward-looking people in the energy, water, agriculture, food, pharmaceuticals, materials, construction, and environmental protection sectors to exchange ideas and gain new perspectives on markets, technologies, strategies and people.

To find out more about this unique society, tick the box on the form overleaf or contact:
SCI Recruitment on T: +44 (0)20 7598 1578; E: membership@soci.org

Or for more information on SCI conferences contact:
SCI Conference Department, 14/15 Belgrave Square, London SW1X 8PS, UK
T: + 44 (0)20 7598 1562; F: + 44 (0)20 7235 7743
E: jacqui.maguire@soci.org W: www.soci.org
Registered Charity No. 206883

PLEASE PASS THIS FLYER TO A COLLEAGUE

I enclose £.....(Cheques drawn in GBP on a UK bank payable to 'Society of Chemical Industry')

Please debit £..... to my Mastercard/Visa/AMEX

Card expiry date / Signed.....

Card holder's name and address if different from overleaf

.....

.....

.....

CANCELLATIONS received in writing one to three weeks prior to the meeting will be subject to a 20% administration charge. We regret that refunds cannot be made for cancellations received after this period although substitutions may be made. However, if a non-member substitutes for a member the difference must be paid. Should unforeseen circumstances occur, SCI reserves the right to alter the content of the programme and cancel or postpone any of its meetings and conferences without notice or, in the case of complete cancellation, liability to enrolled delegates other than return of fees.

DATA PROTECTION: The personal information included on this form will be used by the SCI only and will not be disclosed to any third parties. Please tick if you do not wish to be sent details of any future similar meetings or other SCI services.

Please return completed forms to: Ms Jacqui Maguire,
SCI Conference Department, 14/15 Belgrave Square, London SW1X 8PS, UK
 (One form per delegate - photocopies accepted)