

Health and Safety in Laboratories: Have we got it right?

SME facing HSE

12th November 2012

Dr Trevor Rhodes
HARMAN technology Ltd



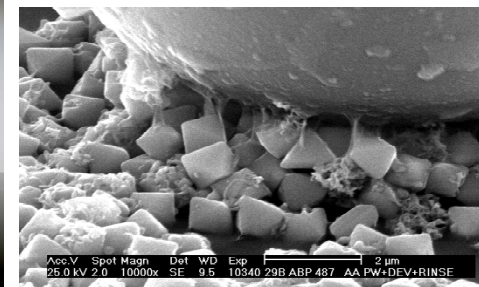
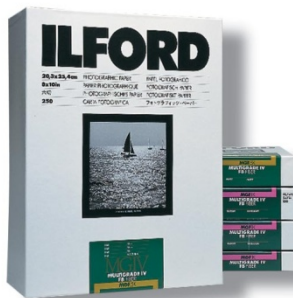
Content

1. Introduction
2. HS&E process adopted at HARMAN
3. Issues we have faced
4. HSE/EA visits
5. Claim Culture
6. Summary

1. Introduction



Research / Manufacturing site



HARMAN
by Hahnemuhle

SME (211 staff)
Research and Development (lab based)
Manufacturing
Engineering
Warehouse / distribution
24 hour security

2. HS&E Process adopted at HARMAN

- a) Control of risks**
- b) Reporting**
- c) Keeping up-to-date**
- d) Training**
- e) Consultants**

a) Control of risks

Identified 12 major hazards

- **Manual handling**
- **Slips, trips, falls, collisions**
- **Traps, crush, entanglement**
- **FLT's**
- **Chemicals**
- **Injury to pedestrians from moving vehicles**
- **Electricity, machines**
- **Flammable/explosive liquids and gases**
- **Tools / portable equipment**
- **Contractors / visitors**
- **Falling from height / objects falling from height**
- **Lifting equipment**

Identified low risk

- **Confined spaces**
- **Night working**
- **Pressure / vacuum equipment**
- **Asbestos**
- **Legionella**
- **Noise**
- **Infections**
- **Stress**
- **Vulnerable persons (YP)**
- **Ionising radiation**
- **Lasers**
- **Steam / hot water**
- **Failure of alarm systems**

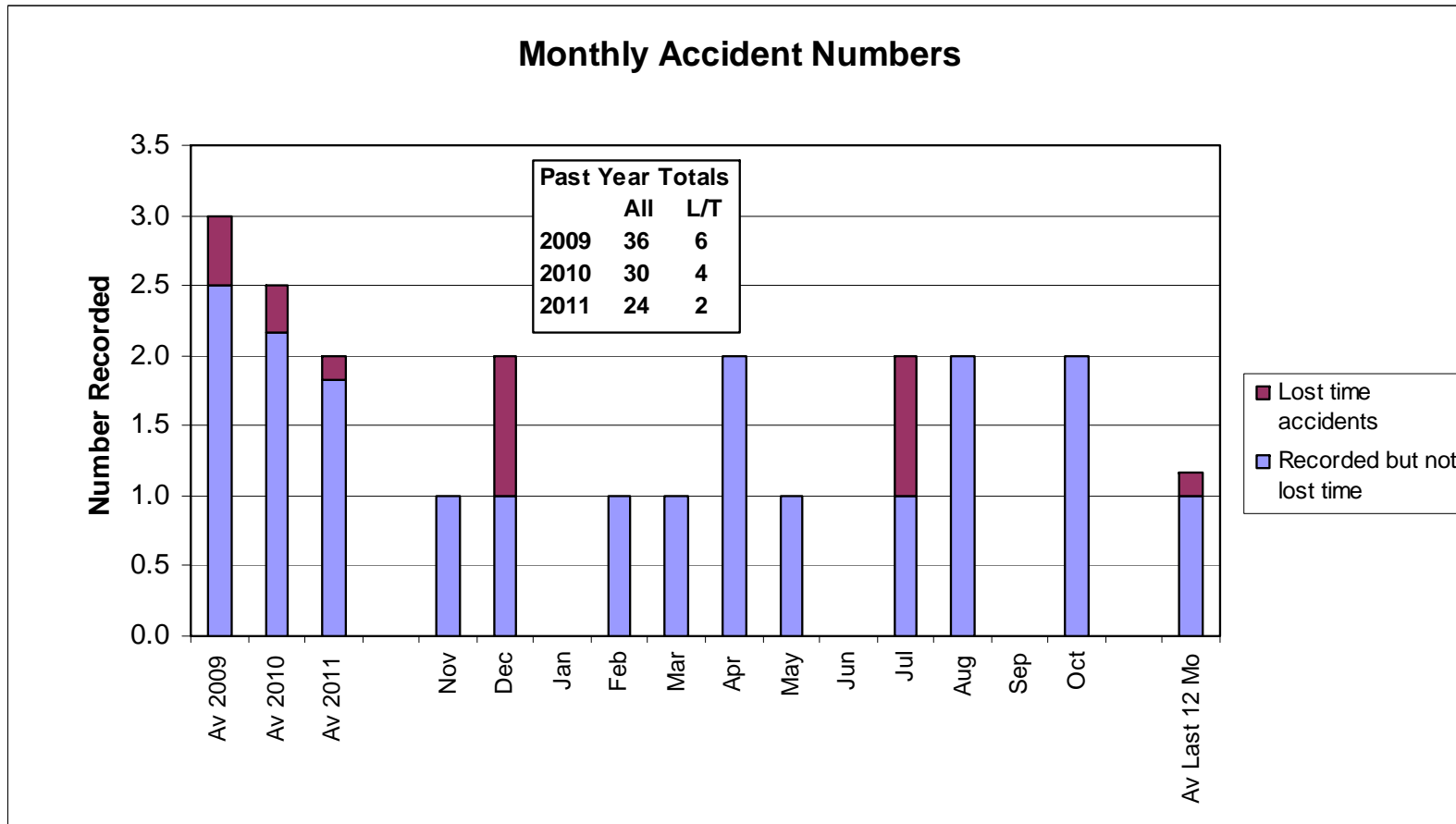
Control the major hazards via :

- **Risk assessments**
- **Safe working practice / procedures**
- **Audits**

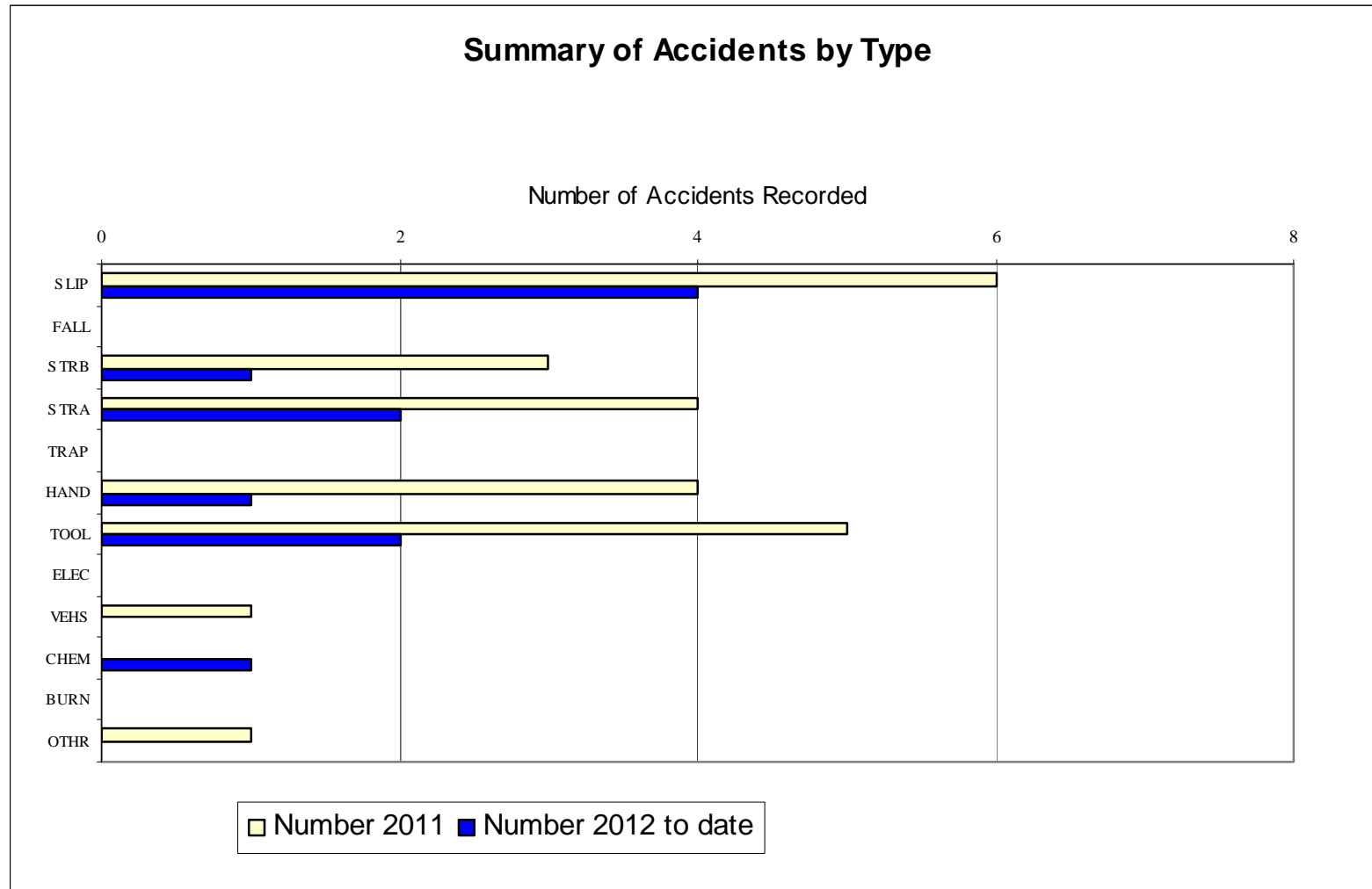


b) Reporting

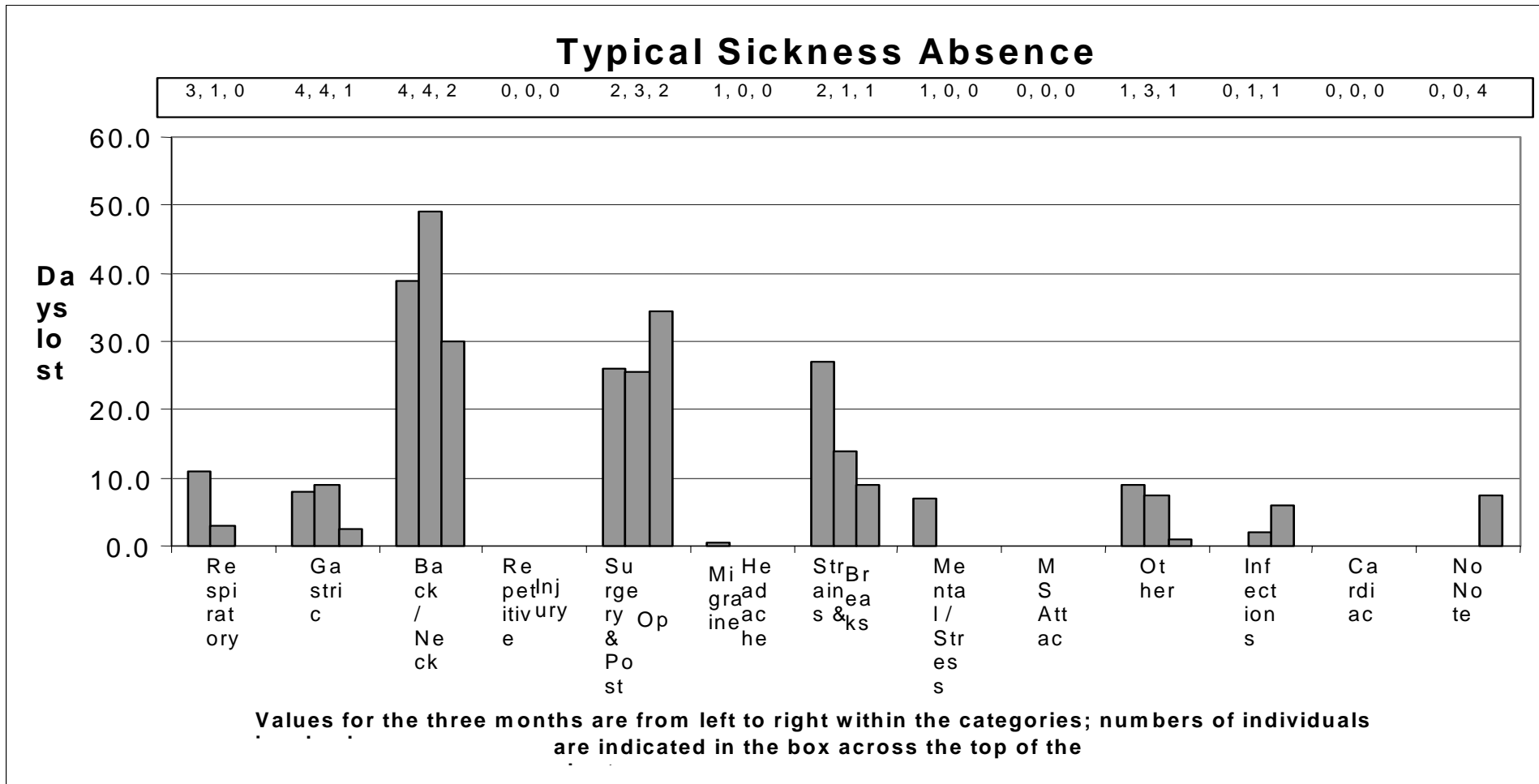
Dummy figures



Dummy figures



Dummy figures



c) Keeping up-to-date

- Trade associations
- British Safety Council membership

d) Training

- e-learning
- work based training

e) Consultants

- asbestos
- racking
- ionising radiation
- legionella
- REACH
- Fire

3. Issues HARMAN has faced

- **Second Hand Equipment from abroad**
- **Racking in Warehouse**
- **REACH**
- **Spillages**
- **Customers looking at MSDSs**
- **Disposal of old tritium lamps**

4. HSE/EA Visits

- **DSEAR**
- **Radiological Protection**
- **Transport**
- **Waste**
- **Noise**

Key HSE/EA issues

- **Competence**
- **Risk assessments**
- **Emergency Procedures**

5. Claim Culture

- Increased over the last 2 years
- Expect claims from 'Lost Time' accidents



6. Summary

- Moving from lab into small and large scale manufacturing, introduces new risks.
- Reducing risks at a lab scale can help reduce risks in manufacturing.
- Adopt a good system for managing risks, right at the start.
- Keep good records and report performance to Board and staff.
- In HS&E
 - **Keep up-to-date in legislation**
 - **Keep training records and assess understanding at end of any training.**
 - **Use consultants**

