
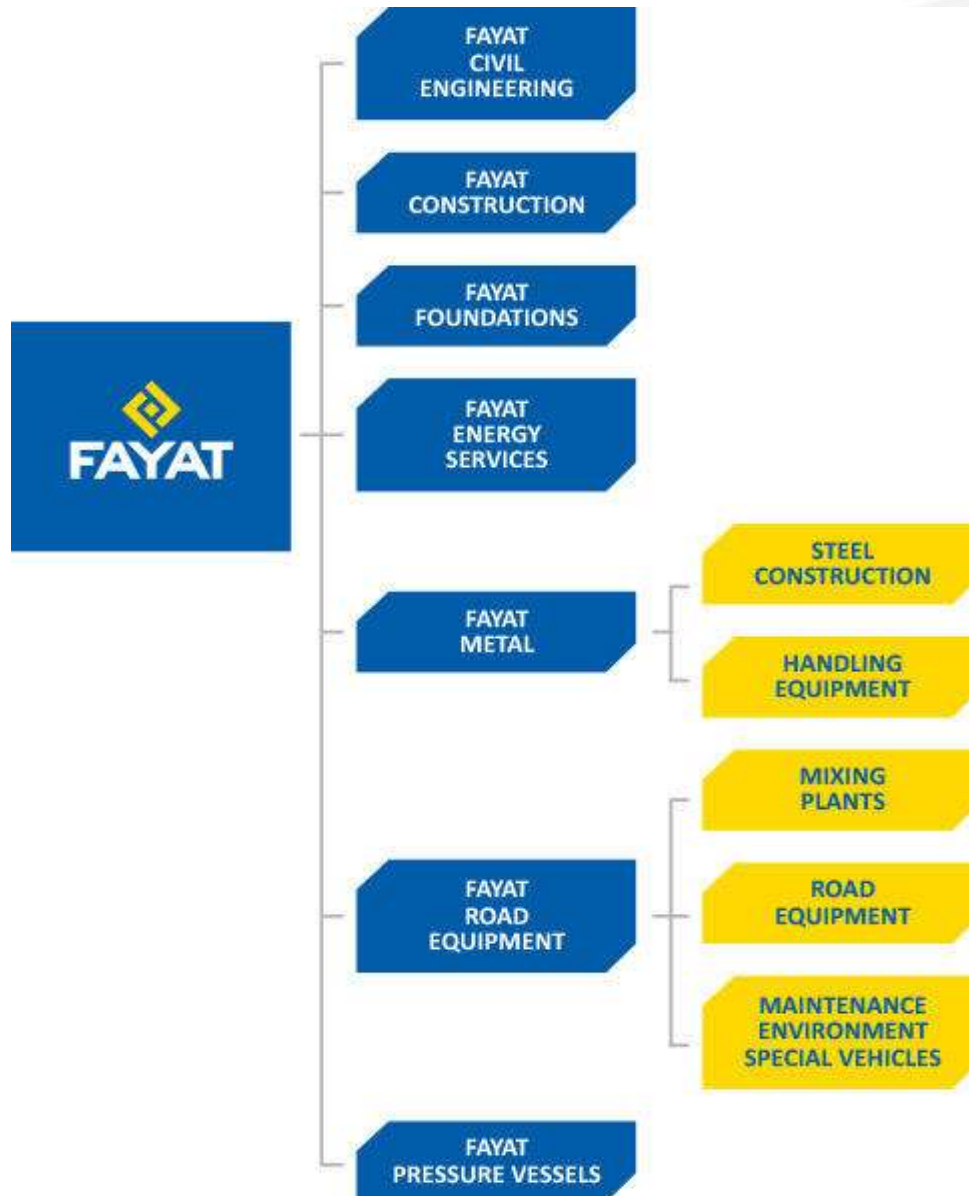
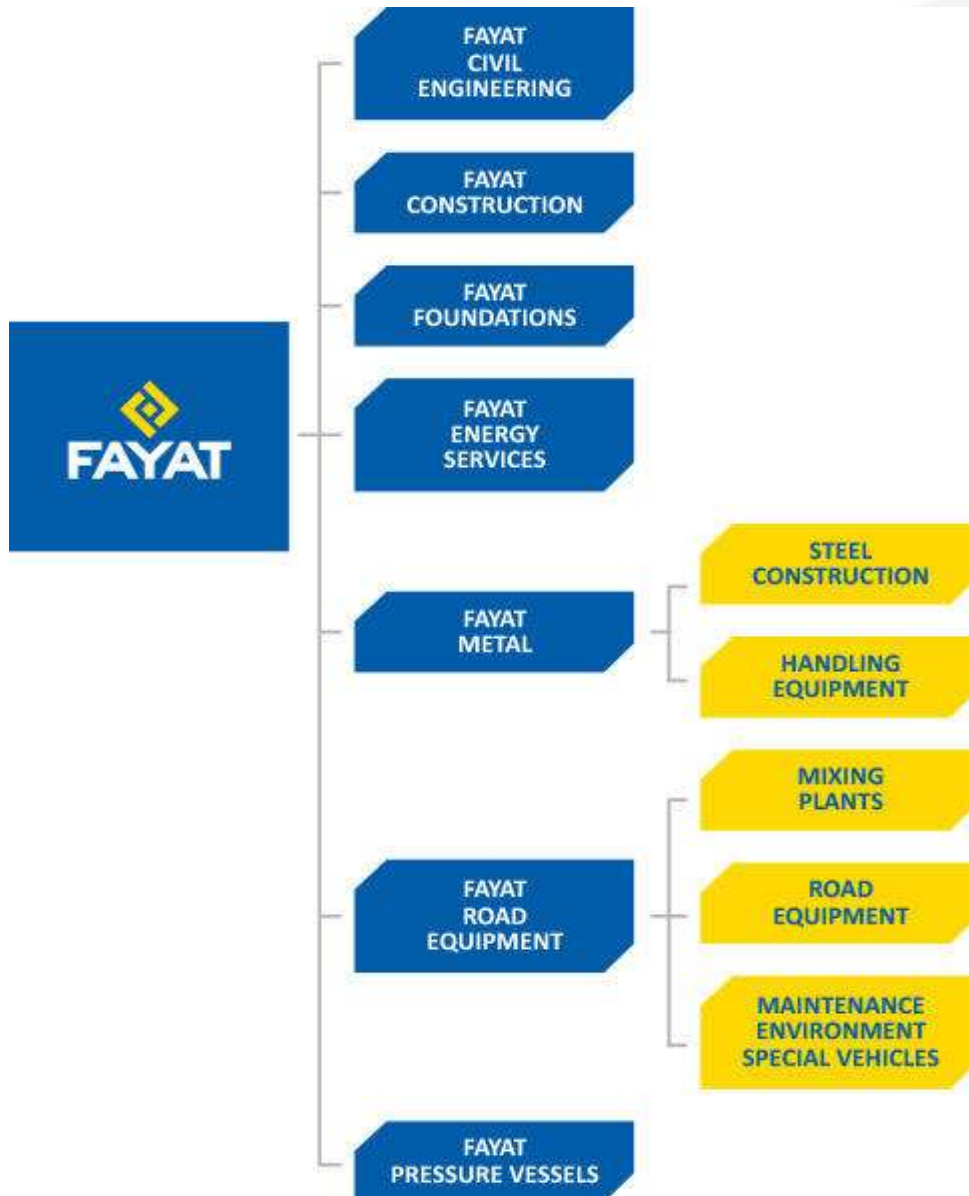


Developments in Surface Dressing Technology

-  **Brief overview of the Fayat Group**
-  **Surface Dressing applications and new developments**
-  **Micro Surfacing applications**
-  **New rules and their influences**
-  **Problems with Potholes ?**

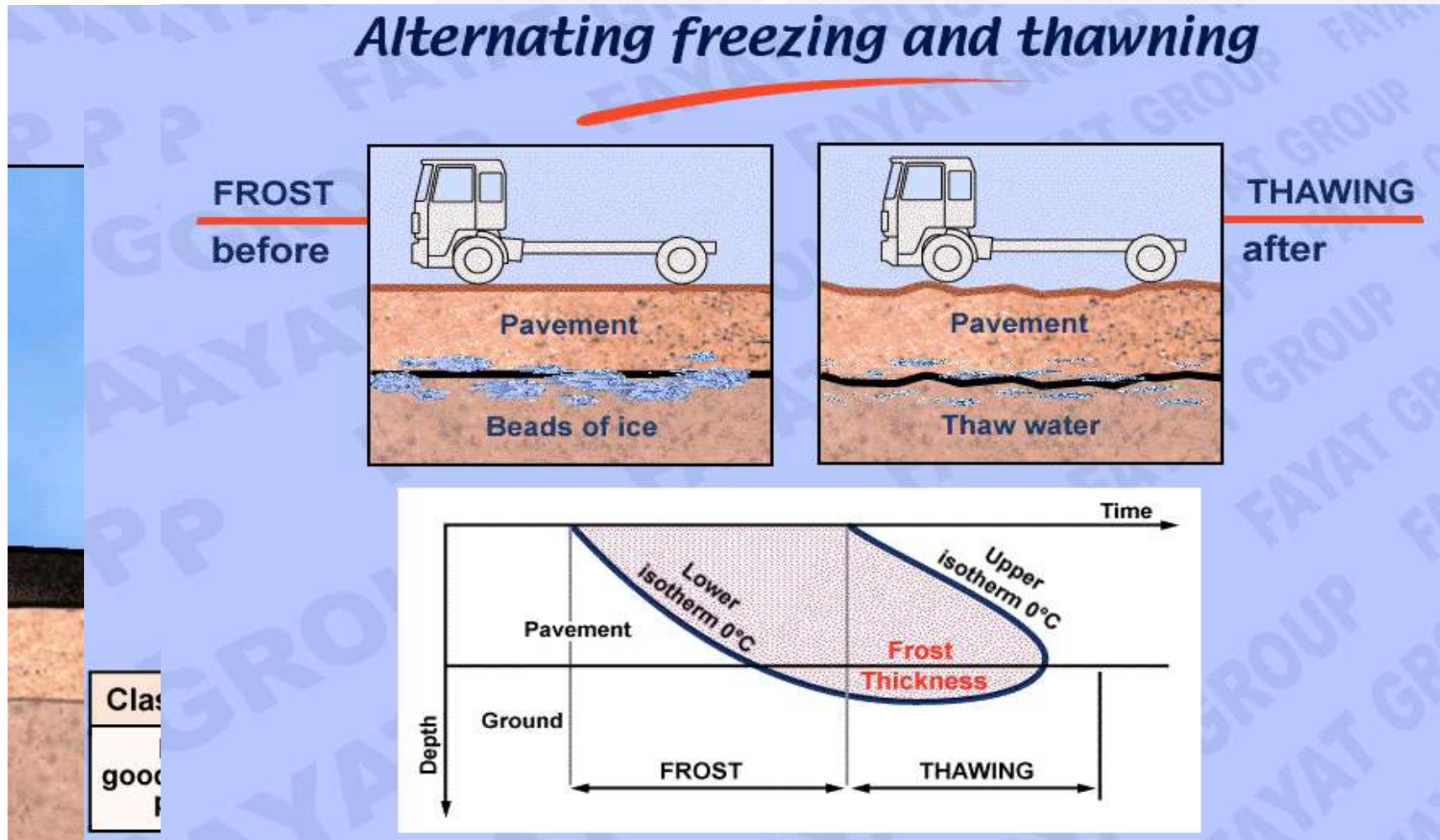


- ATS
- BREINING
- BOMAG
- 3D
- MARINI-ERMONT (FAMARO)
- AES (FAMATEC)
- SAE (FAMATEC)
- MARINI
- MATHIEU
- PTC
- RAVO
- SECMAIR
- CHARLATTE MANUTENTION

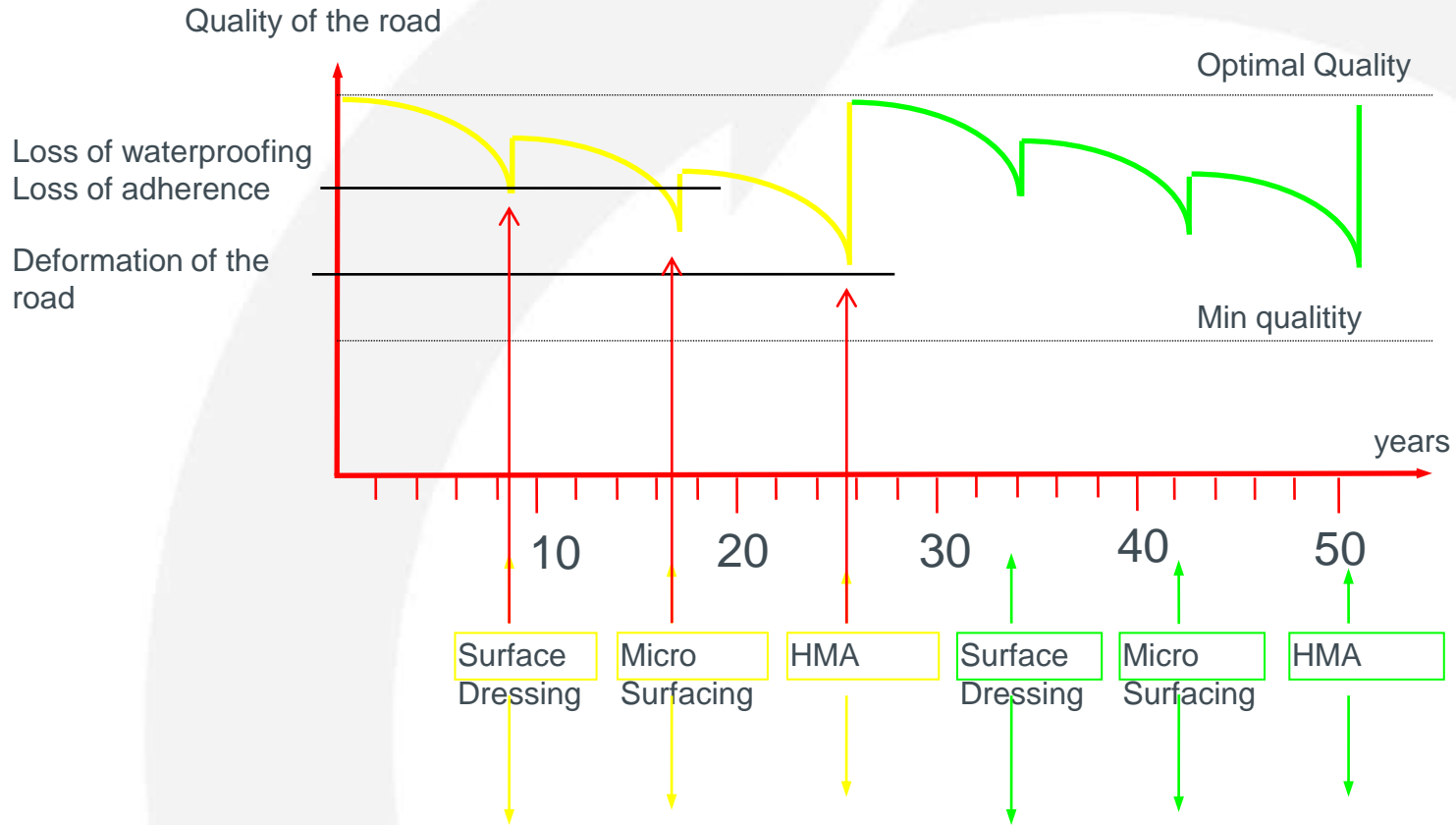


- ATS
- BREINING
- BOMAG
- 3D
- MARINI-ERMONT (FAMARO)
- AES (FAMATEC)
- SAE (FAMATEC)
- MARINI
- MATHIEU
- PTC
- RAVO
- SECMAIR
- CHARLATTE MANUTENTION

Roads are getting older



Consequences



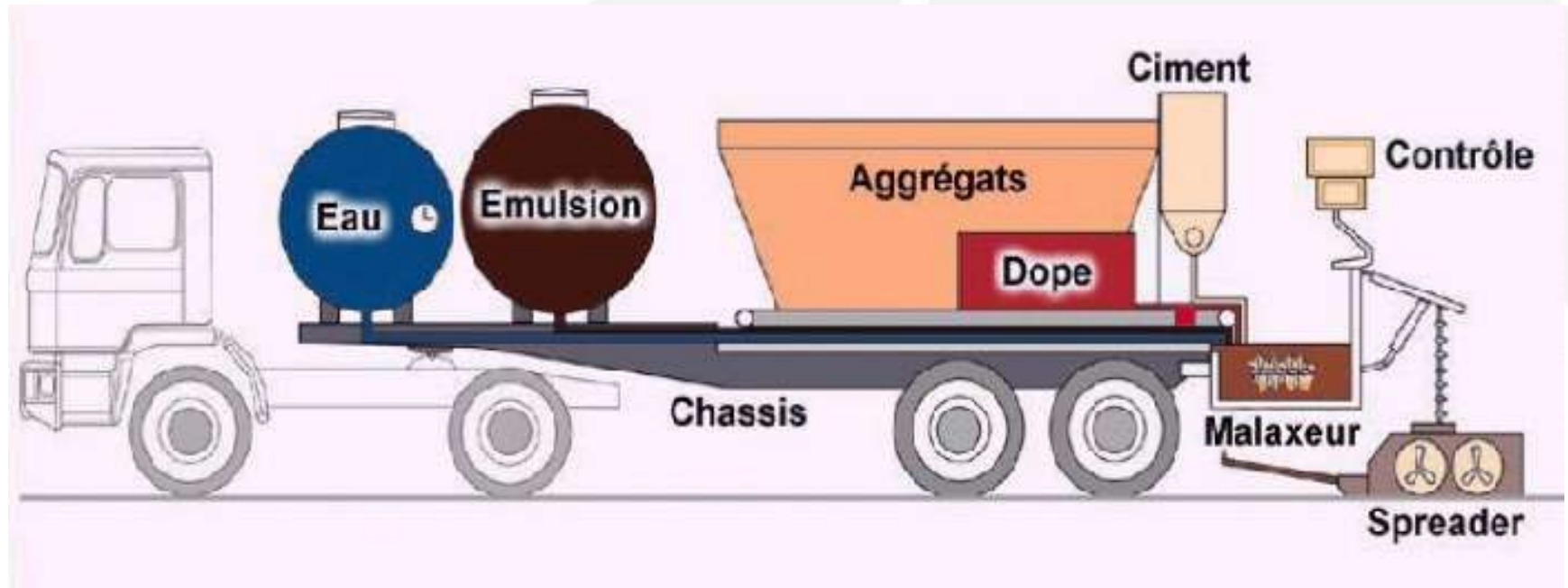
3 types of Surface Dressing treatment

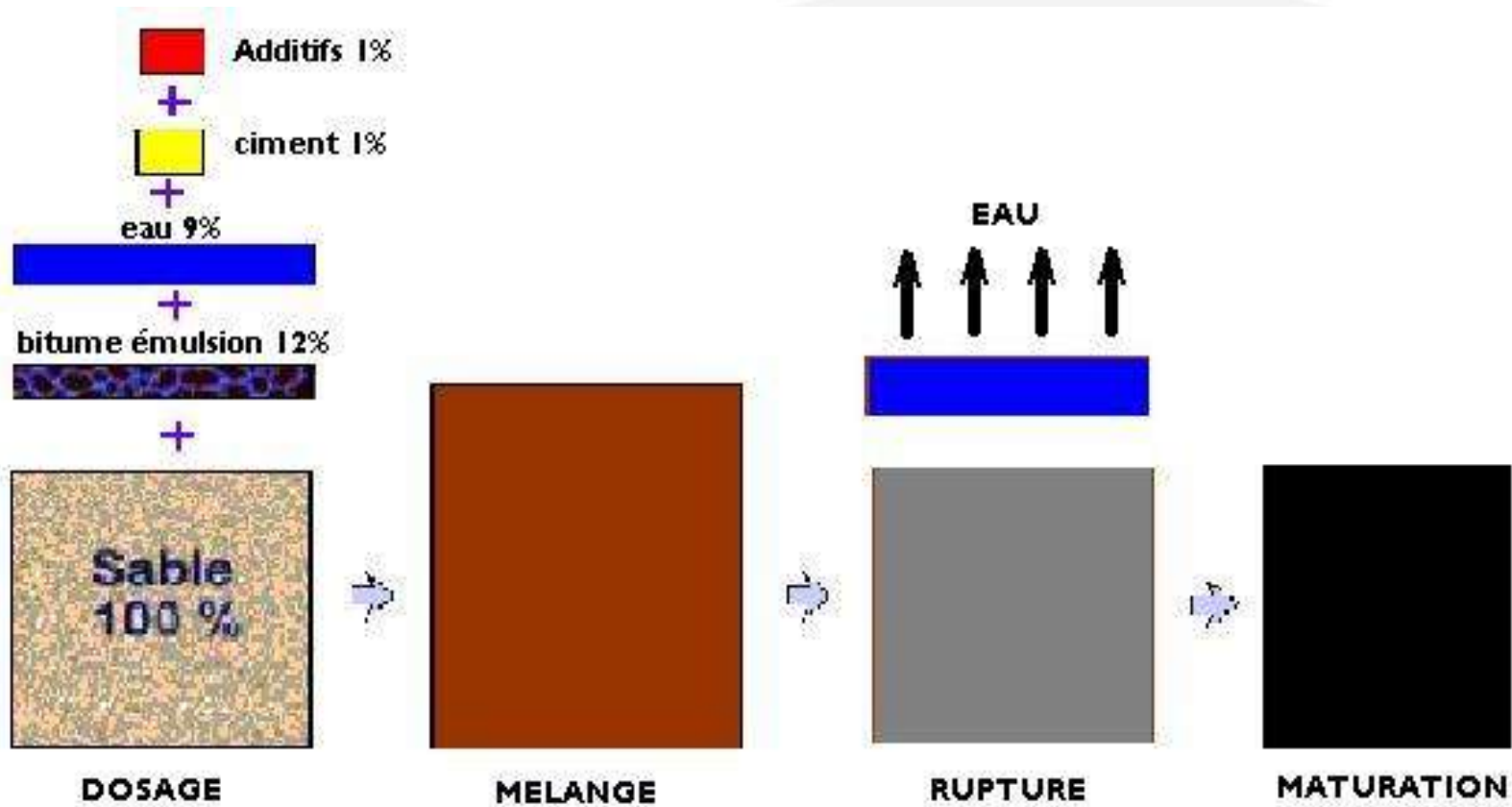
- Full width / straight roads : Binder sprayer + Spreader

- Small surfaces / urban areas Synchronuous Bindersprayer and spreader

- Patching treatment : Synchronuous Bindersprayer and spreader with the new pilot system


Microsurfacing






Air pressure Dosage / Pump Dosage / Pump Dosage computerized



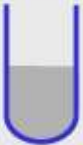
granulats concassés
0/4, 0/6, 0/8 ou 0/10
recomposés
environ 100 kg
Formule cont. ou discount.
(humidifié en carrière)




émulsion de bitume (modifié ou non)
60 %
environ 11 à 13 kg
5,5 à 8,5 ppc de bitume résiduel



eau
environ 10 kg

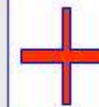


additif dilué
0 à 0,5 kg



chaux ou ciment
0,75 à 1,5 kg

régulateur de rupture



Possibilité fibres
0,07 à 0,1 kg




PRODUCTION

SAND	CIMENT	EMULSION	WATER	DOP1
1000.0 kg/mn	0.3 %	10.0 %	12.0 %	0.3 %
	-30.0 %		0.0 %	0.0 %
	0.2 %		8.4 %	0.2 %
0.0 kg/mn	0.0 kg/mn	76.5 l/mn	0.0 l/mn	2.0 l/mn
0.0 kg/mn	0.0 kg/mn	76.4 l/mn	0.0 l/mn	2.0 l/mn



100.0 %
0.0 kg/mn

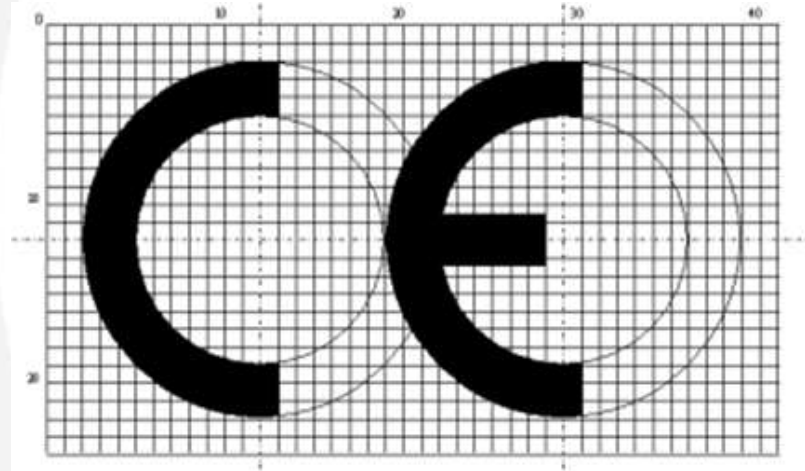
SITE	site road N67	CORRECTION	MIXING	HUMIDITY	AIR	FLOOR
RECIPE	Formula 10% Emulsion	5.0 %	11 s			
	Time	Date	Message		Class	

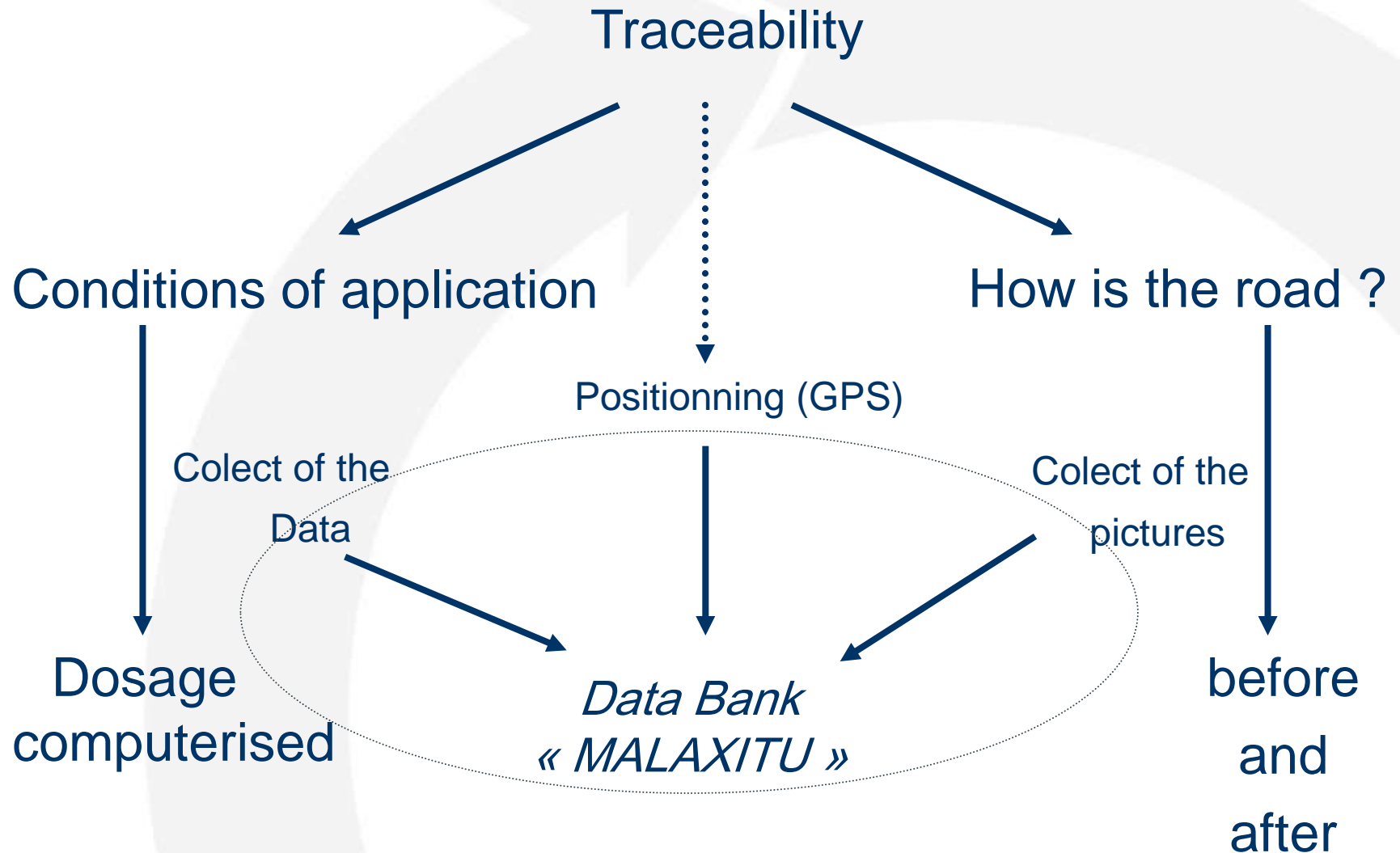
The CE Marking:

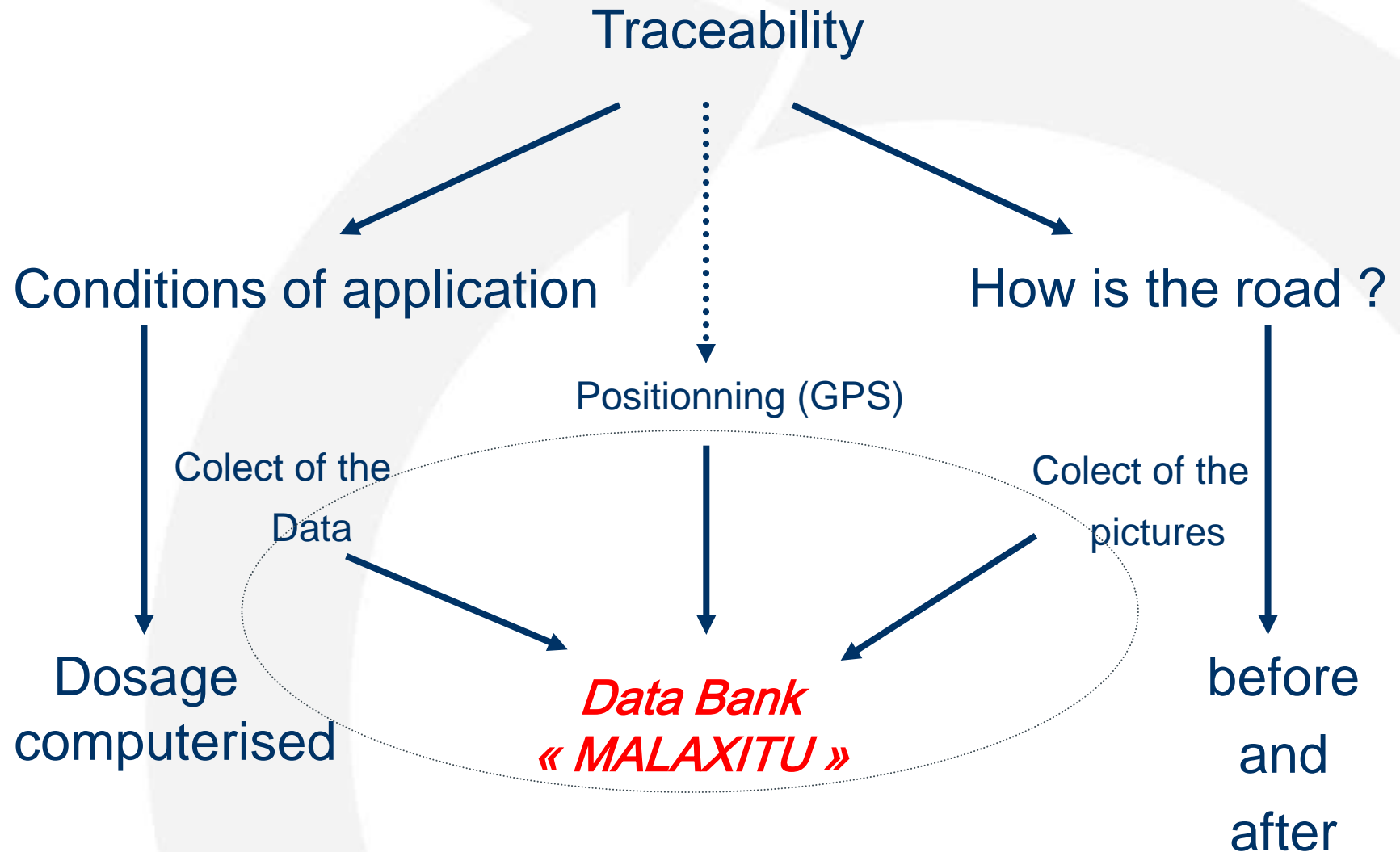
Main rules and obligations for the companies :

1- to prove the conditions of laying (environment, dosage...)

2- to store the data at least 5 years





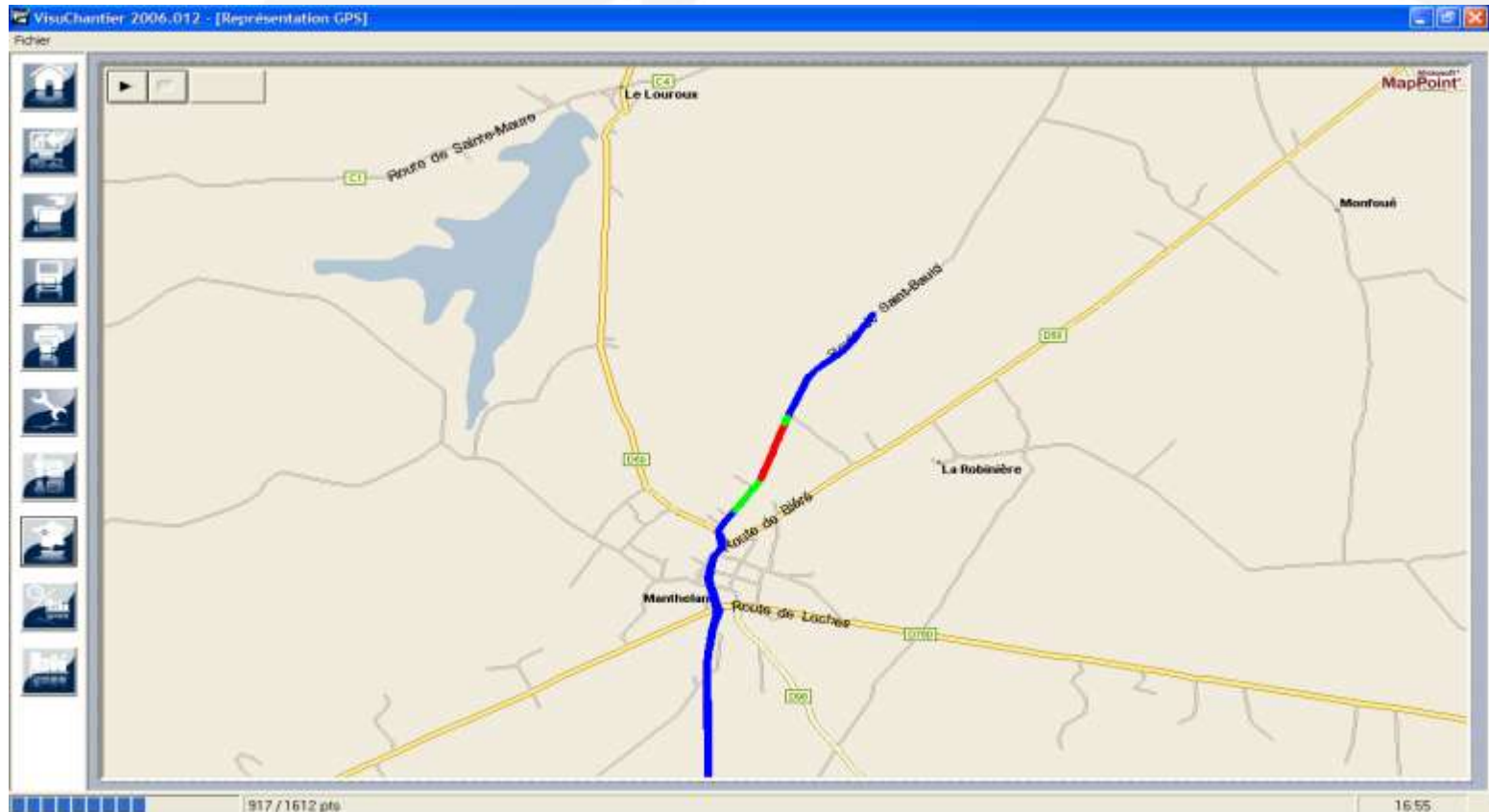


Which data do we collect?

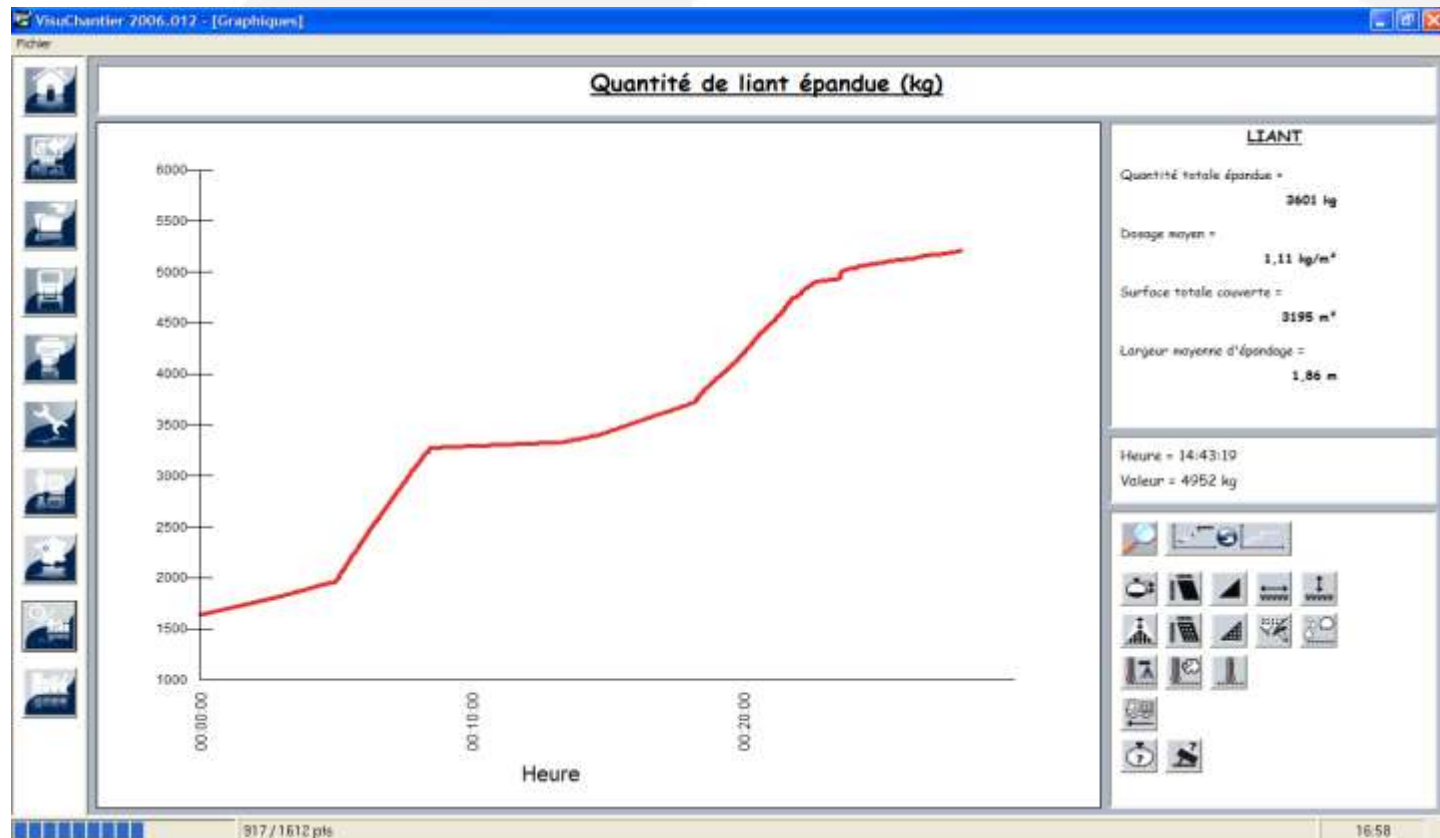
- ▶ *Position GPS positioning of the machine*
- ▶ *Aggregates and binder dosage*
- ▶ *Square meters covered (aggregates/binder)*
- ▶ *Quantity spread (aggregates/binder)*
- ▶ *Temperature binder/air/ground*
- ▶ *Width of laying*
- ▶ *Opening height of the gates*
- ▶ *Working angle (tipper + road)*
- ▶ *Working speed*
- ▶ *Picture before and after the treatment*

Example : GPS map- 3 modus:

- ▶ *Transport (blue)*
- ▶ *Full work (green)*
- ▶ *Spraying (red)*



Example : Quantity of binder




Example : pictures before / after

VisuChantier 2006.012 : [Photos]


Fichier

Photos

Avant



Arrière

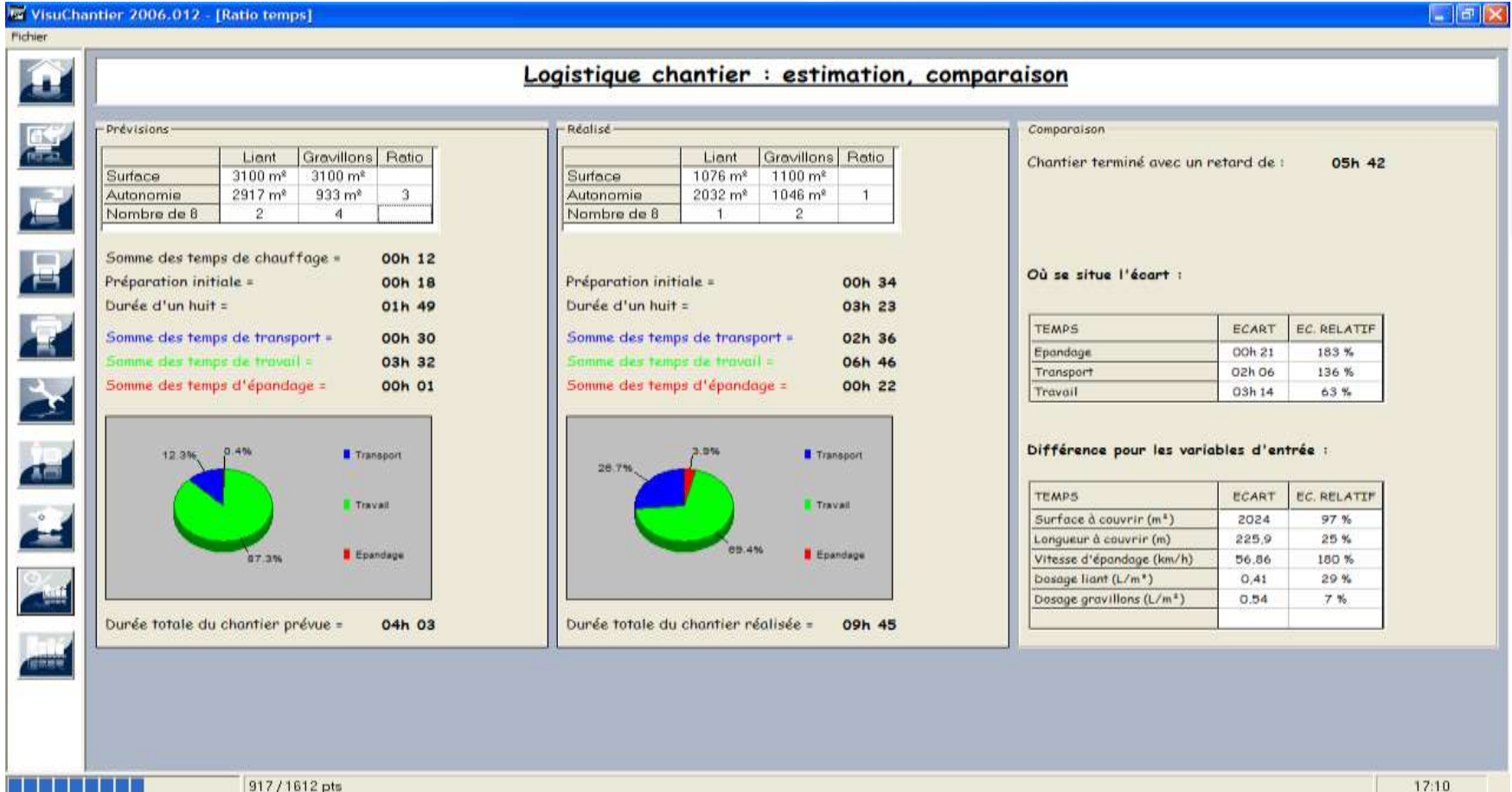


226 / 448 jlb111007111921.jpg 226 / 448 jlb111007111921.jpg

Index	Date	Heure	Surface trait - m²	Dosage trait -	Dosage gravillons - L/m²	Longeur d'épandage - m	Vitesse d'avance - km/h
2409	11/10/07	11:19:21	448	2,08	3,9	2,2	3,24
2406	11/10/07	11:19:24	448	2,34	3,7	1	3,24
2408	11/10/07	11:19:27	453	2,34	3,7	1	3,24
2411	11/10/07	11:19:30	453	2,09	3,7	1,2	3,16
2413	11/10/07	11:19:33	458	2,09	3,7	1,2	3,2
2415	11/10/07	11:19:36	458	2,07	3,7	1,2	3,2
2418	11/10/07	11:19:39	465	2,07	3,7	1,2	3,2
2420	11/10/07	11:19:42	465	2,12	3,7	1	3,2

917 / 1612 pts 17:06

PRODUCTIVITY – Results in situ of the jobsite



Problems with Potholes ?



or not...



We have the solution

SWIFT

A sustainable solution for potholes

INTERMAT



INNOVATION
AWARDS 2012

- The solution to repair durably a pothole

- Hot mix asphalt

- ▶ *None side effects (bleeding)*

- ▶ *Working in any seasons*

- ▶ *Strong repairing*

- ▶ *HMA is available all over the world*





Thank you for your attention